

K.R.MANGALAM
GLOBAL SCHOOL
(An IB World School)



Aspire. Acquire. Accomplish.





We are proud of being

Ranked 3rd IB School in Gurugram

By Times School Survey 2021

Educating young minds with a futuristic approach

K.R. Mangalam Global School is a Primary Years Programme authorized IB World School. Globally, IB Educators are committed to providing student-centered education. Through the Primary Years Programme (PYP), we ensure that learning is engaging, relevant, challenging, and significant.



Visionaries at the helm

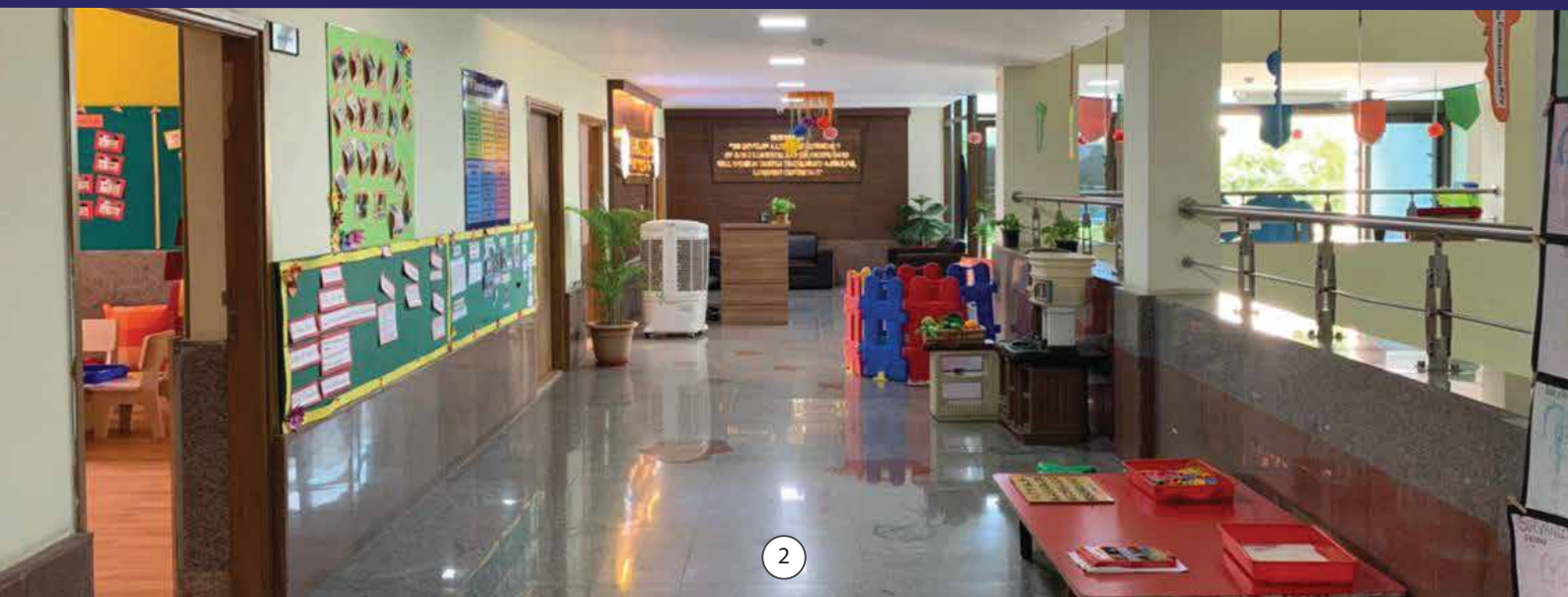
What we are today comes from our thoughts of yesterday, and our present thoughts build our life of tomorrow.

Yash Dev Gupta

Chairman, K.R. Mangalam Group



The paradigm shift toward globalization has added a drive to the race for excellence in education. In today's scenario, quality education is not just about obtaining high percentages; it is all about multi-dimensional and multi-faceted growth. The school needs to be a center where children can widen their horizons. The need of the hour is to expose students globally, with a strong focus on skill development. They must be equipped and capable of being the nation's human resources. Since India harbors a rich culture, we need to strike a precise balance between tradition and the modern system. K.R. Mangalam Global School, Gurgaon, is the amalgamation of the right attitudes and values. Students are impeccably groomed to become a catalyst for growth and always strive to do better with a firm belief that there are no speed limits on the road to excellence.



Visionaries at the helm



Neha Nagarsheth
Head of School

We are driven by excellence, innovation, and creativity at K.R. Mangalam Global School. Our program has been thoughtfully designed to enable learners to grow holistically and, more importantly, to enjoy learning.

We particularly intend to instill in our learners a strong value and belief system that inspires them to contribute to society. We believe in empowering and preparing our children for a rapidly changing world. We strongly believe that a solid moral and ethical foundation creates good citizens who, albeit in a small way, make the world a better place by contributing to the community, country, and world.

Our vision is to create a school community where every individual, student or educator, is a lifelong learner.

Our Vision

To develop a learning community of agile learners and educators who will work in tandem to cultivate a soulful learning experience.

Our Mission

Our mission is to raise learners who have a strong moral fiber; are self-reflective, resilient, and responsible individuals with a strong sense of identity who strive to be agents of change for building a more equitable and humane society.



Distinctive **FEATURES OF THE SCHOOL**

- A student-teacher ratio of 1:10
- IB Trained and Experienced Teachers
- Student Led Conferences
- Focus on the development of skills over content
- Curated Curriculum encourages the cultivation of unique skills, interests, attitudes, and appreciation
- Carefully designed, effective and continuous assessment
- Guest Speakers, Field Trips, and Workshops
- Innovative space to encourage differentiation
- Regular and Open communication with parents
- Student engage in play as inquiry

THE INTERNATIONAL BACCALAUREATE PRIMARY YEARS PROGRAM

THE INTERNATIONAL BACCALAUREATE (IB) programs aim to do more than other curricula. The IB gives students distinct advantages by building their critical thinking skills nurturing their curiosity and ability to solve complex problems.

WHY IB?



Infrastructure and Facilities



**KRMGS is located
in the heart of
Gurugram.**

This world-class campus offers state-of-the-art facilities including:

Library, Performing and Visual Arts Room, Splash Pool, Basket Ball Court, Lawn Tennis Court, Skating Rink, Football Court, Play-scape and outdoor slides, Badminton Court, Table Tennis, a Shooting Range, Golf, Gymnastics, Taekwondo Arena, Chess and other Board Games in a dedicated Sports facility.

Safe and secure campus

- A Safe and Secure School Campus.
- A three-tier security system with CCTV cameras monitored in the server room.
- A clean and sanitized learning environment for children created using globally recognized pandemic protocols.
- Safety guidelines training for students and staff awareness programs.

We provide transport facilities to all students, covering all areas across Gurugram. The presence of a certified conductor and bus driver, a female attendant, and safety tools like a first-aid kit, fire extinguisher and GPS tracking ensure our student's safety in the air- conditioned buses.



Our Programmes : **Early Years programme**

At K.R. Mangalam Global School, early years learners can explore freely and engage with the stimuli in their environment. The focus is on the play, which encourages students' creativity and imagination.

Early Years Learning Focuses on **FIVE AREAS OF DEVELOPMENT**

Personal,
Social and
Emotional
Development

Physical
Development

Expression
through Art

Understanding
the World

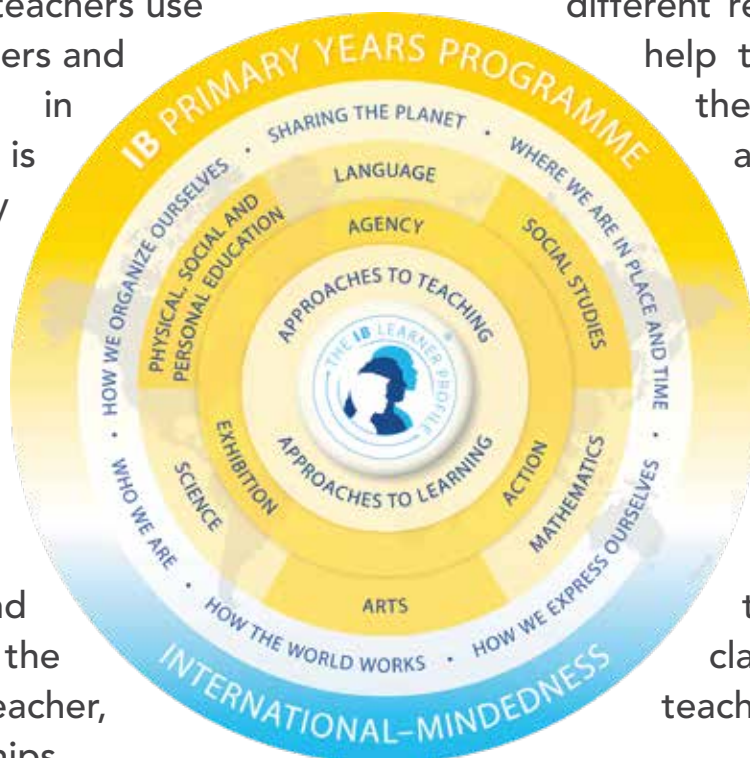
Communication
and Language



Our Primary Years Programme

The International Baccalaureate Primary Years Programme (PYP) is designed for students aged 3 to 12. It focuses on the total growth of a child, encompassing social, physical, emotional, and cultural needs and academic development. The PYP draws on research and experiences of influential educationalists to create a relevant, engaging, challenging and significant educational framework for all children.

The IB Primary Years Programme (PYP) nurtures and develops young students as caring, active participants in a lifelong learning journey. The PYP offers an inquiry-based, transdisciplinary, student-centered education that builds conceptual understanding. Teachers constantly keep track of the learners' abilities and interests using running records and use this data to create learning spaces, and plan group works. In addition, teachers use different resources in the class to engage the learners and help them feel motivated and self-directed in their learning. The PYP offers an essential pillar of the stakeholders' efforts and parents and the school community to work together to create conducive environments to support the needs of the various learners. "One on One" sessions with teachers, group and peer-peer relationships in the classroom promote teacher-parents, and





Our Learning pedagogies

Concept driven

Students spend their time at school exploring and learning about important ideas that have relevance in their lives and can transfer to other contexts. Their learning to be transferrable to new situations – not locked in time and place Our aim is to develop students' understanding of big ideas, not just their knowledge or skills.

Inquiry-Based

We believe children learn best through structured, purposeful inquiry. This pedagogical approach is focused on student inquiry and the principles of constructivism, encouraging learners to construct meaning and take responsibility for their learning process. Students are encouraged to ask questions, investigate and find ways to answer these questions, and sustain this enthusiasm of learning throughout life.



Collaborative

Learning is a social endeavor, and there is great emphasis on sharing, group work and collaboration at our school, thus fostering social and cognitive development and laying the foundation for learning in multiple academic areas. They learn to communicate well, encourage and support each other, and develop an open mind to learn from each other, thus developing social skills through collaborative play.

Differentiate

We aim to design learning engagements to suit children at all different levels of competence or experience, providing support to all our students. The environment of school motivates children to explore and bring out the hidden talents in them and get to ascertain something new from it.



Our Values

The sole aim of the IB program is to develop global citizens who, by recognizing their common humanity and shared guardianship of the planet, help to create a better and more peaceful world.

Open-Minded

We critically appreciate our own cultures and personal histories, as well as the values and traditions of others. We seek and evaluate a range of points of view, and we are willing to grow from the experience.

Reflective

We thoughtfully consider ideas and experiences. We work to understand our strengths and weaknesses to support learning and personal development.

Knowledgeable

We develop and use conceptual understanding, exploring knowledge across various disciplines. We engage with issues and ideas that have local and global significance.

Caring

We show empathy, compassion, and respect. We are committed to the service of humanity. We aim to develop a sense of empathy and responsibility towards society.



*Go Beyond
Impossible
with Innovative
learning*

Balanced

We understand the importance of balancing different aspects of our lives - and recognize our interdependence with other people and the world we live in.

Risk-Takers

We explore new ideas and innovative strategies, challenging our way of thinking and encouraging us to take decisions. We endeavour to take risks that will bring creativity to learners and enhance their knowledge in different fields.

Inquirers

We nurture curiosity, developing skills for inquiry and research. We know how to learn independently and with others. We are keen learners. Inquiry boosts independent problem-solving skills using critical thinking.

Thinkers

We analyze and take responsible actions on complex problems. We encourage to question and reflect on knowledge to arrive at opinions to make an effective decision.

Communicators

We express ourselves confidently and creatively in more than one language and way. We work together to pay close attention to the perspectives of other individuals.



Admission Process



- Apply for Admission by filling out the form on our Website
- Visit the school for a Campus Tour
- Meet the IB Coordinator to understand the curriculum, more about the school and admissions
- Wait for our congratulations email to inform you about your admission result
- Submit the supporting documents & pay the fee to confirm your seat!

For Admissions Call:

Call at :

+91 8750045132

Email at :

admissions@global.krmangalam.com

Apply through :

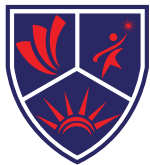
www.krmglobalgurgaon.com



K.R.Mangalam

Group Legacy





K.R.MANGALAM
GLOBAL SCHOOL
(An IB World School)



KRMGS is an Authorised Exam
Centre for Trinity College London

TRINITY
COLLEGE LONDON
Registered Exam Centre 70885

Call at :

+91 8750045132

Visit us at :

www.krmglobalgurgaon.com